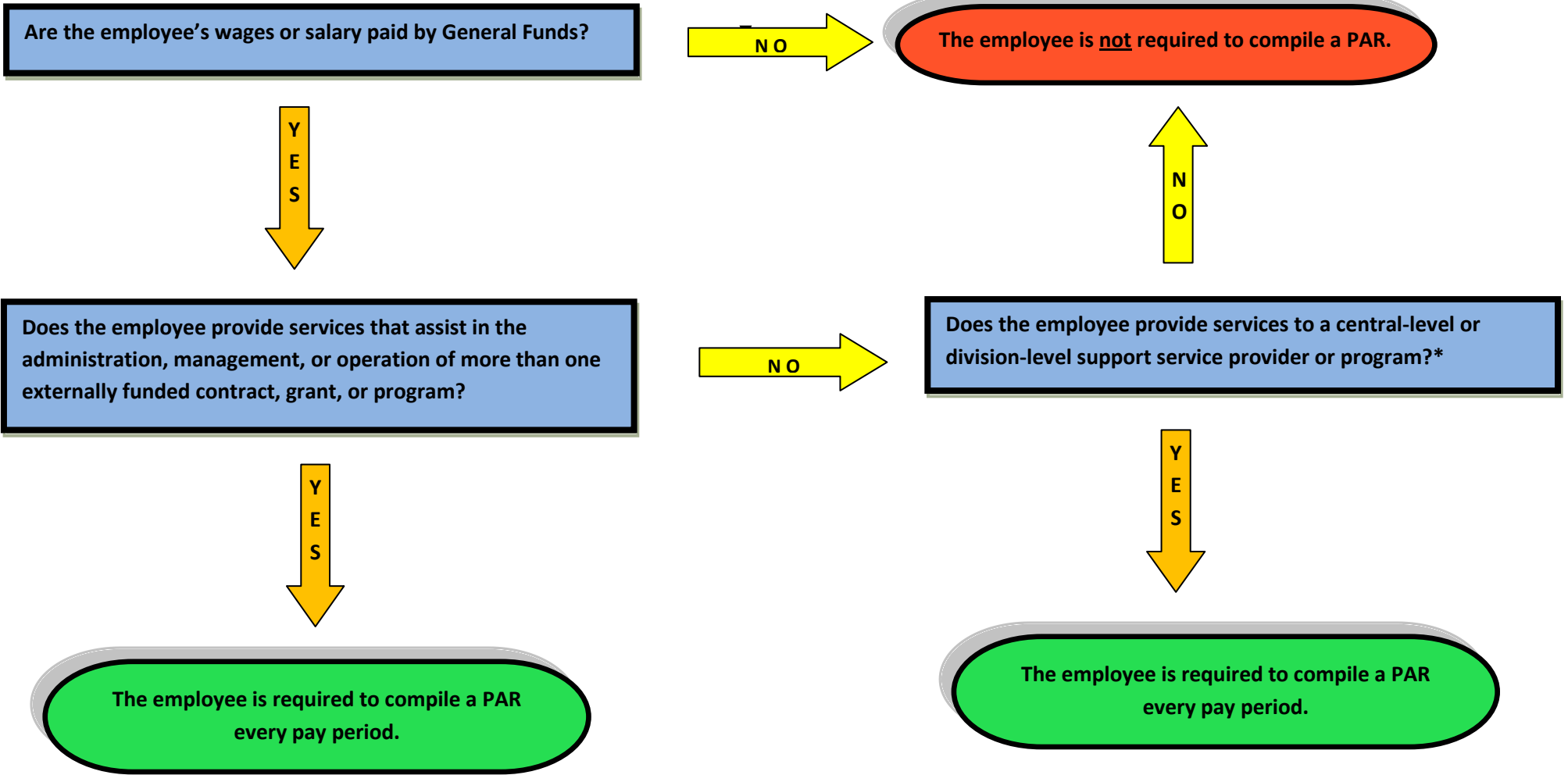


Navajo Nation Indirect Cost Tracking

WHICH TRIBAL EMPLOYEES ARE REQUIRED TO COMPILE A PERSONNEL ACTIVITY REPORT (PAR)?



* A central-level support service provider is a program that only provides services to other tribal programs, such as Office of the Controller or Office of Management and Budget. A division-level support service provider is a section or an employee within the division that provides services to other employees within the division, such as a computer technician, accountant, or Administrative Services Officer.